

| | |
|-------------------|---|
| Model | SD-200SA |
| Description | Generator Interlock Kit Square D Meter Main Homeline 150 and 200 amp panels |
| Main Breaker | 200 Amp Horizontal throw 4 Handle Main Breaker |
| Generator Breaker | Below Main |



WARNING

Only qualified personnel should be working on the panel box
An amateur should NEVER open the panel box
Please follow all rules and regulations of the National Electric Code

Step 1: Disassemble the interlock. Place the bottom plate (holes only) at middle of main and this will line up with the bottom edge of the generator breaker and mark holes as in picture below.



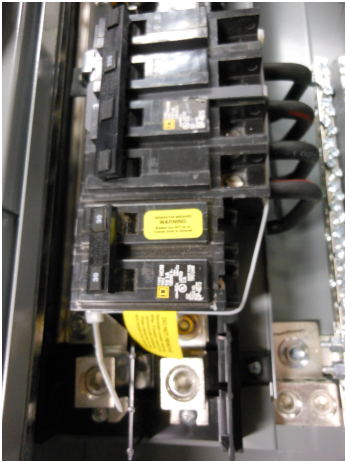
Step 2: Turn off the main breaker and remove the panel cover.

Step 3: Drill holes as marked on panel cover with supplied 3/16 drill bit and remove all burs from drilling cover.

Step 4: Insert screws from rear of cover, install bottom plate, and install top plate (slotted) install thread lock to screws and install retaining nuts. Ensure proper movement.

Step 5: Install 2 pole Generator breaker below main breaker and place Generator Warning Sticker on Generator breaker.

Step 6: Combine the zip ties to make a loop and install zip ties around top set of breakers in panel as shown in picture below. Pull on ends to make tight around breakers. Trim zip ties as needed and install Warning label next to release tab on zip tie at generator breaker.



Step 7: Re-Install panel cover, Verify proper operation of interlock. Main breaker **ON**, generator breaker **OFF** and generator breaker **CAN NOT** be turned on. Generator breaker **ON**, main breaker **OFF** and main breaker **CAN NOT** be turned on.



Main On



Generator On

Place Generator start-up procedure label on panel box, Place CAUTION label on panel box and electric meter pan.

The MAIN and the GENERATOR breakers should NEVER be able to be turned on at the same time. If panel cover is removed the Generator breaker is NEVER to be turned on. If for any reason the interlock does not function properly, DO NOT USE and contact us immediately at sales@GenInterlock.com for support and instructions.

Thank You for your support,

GenInterlock Team

DISCLAIMER: GenInterlock.com is NOT responsible for misuse or improper installation. All electrical equipment should be installed and maintained by qualified personnel. Any consequences arising from improper use is the responsibility of the user.

GenInterlock.com
Sales@geninterlock.com
 732-339-4191